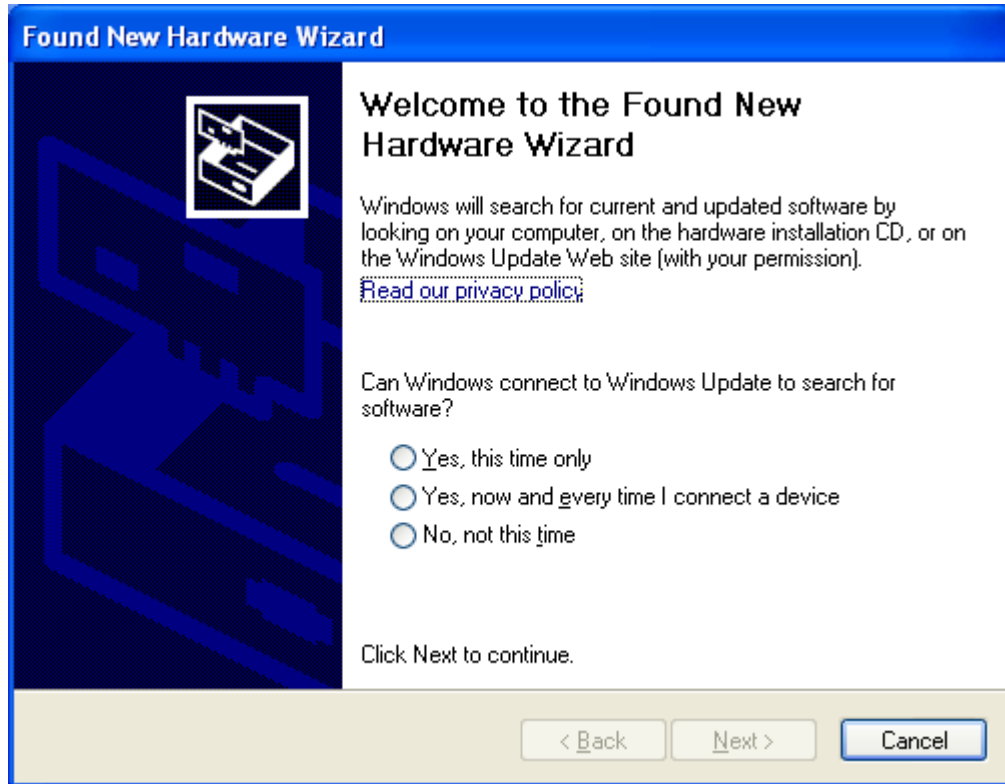


Follow instructions on the Hardware Installation sheet for installation of the AFDX card in the PC.

STEP 1: POWER UP with AFDX Card Installed

When the PC powers up the “Found New Hardware Wizard” will appear:



Before continuing, first install the Goebel RDC Drivers included on the CD or other media as shown in the next step.

This installation step will simply copy the needed driver files into the appropriate locations.

STEP 2: Installation of the Goebel Driver files.

Example: Click on Goebel_RDC_Drivers-0.2.3-a.exe to Install the driver files.
Follow the steps in the Installation Wizard to copy the Drivers Files.
(NOTE: Version may be a later version than shown in the example.)



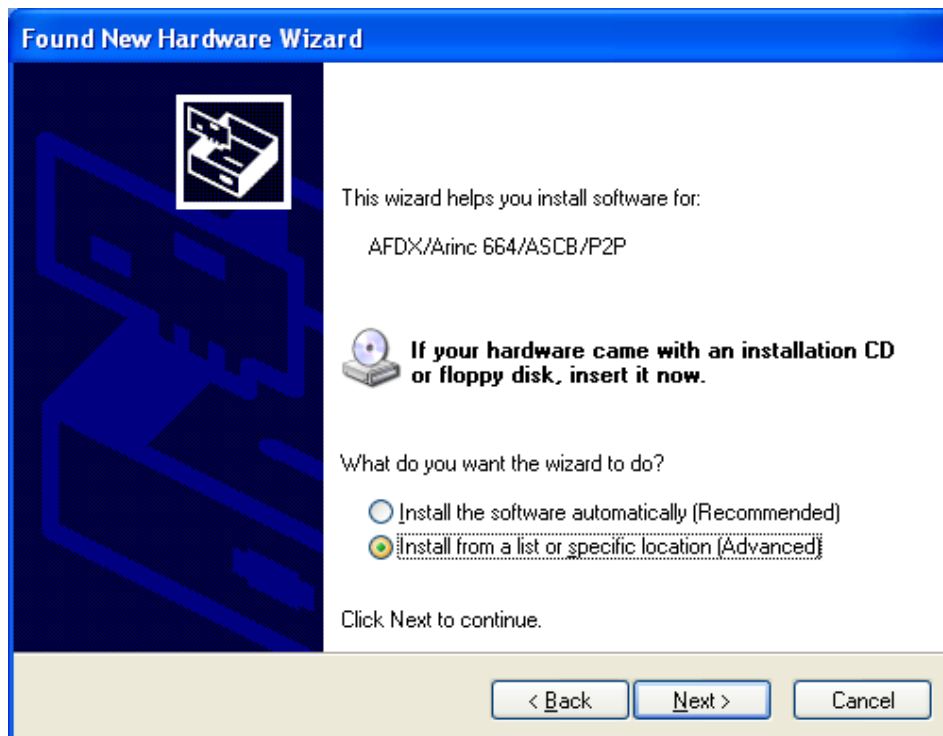
STEP 3: Install the RDC Driver through the Hardware Wizard.

Now continue with the “New Hardware Wizard”

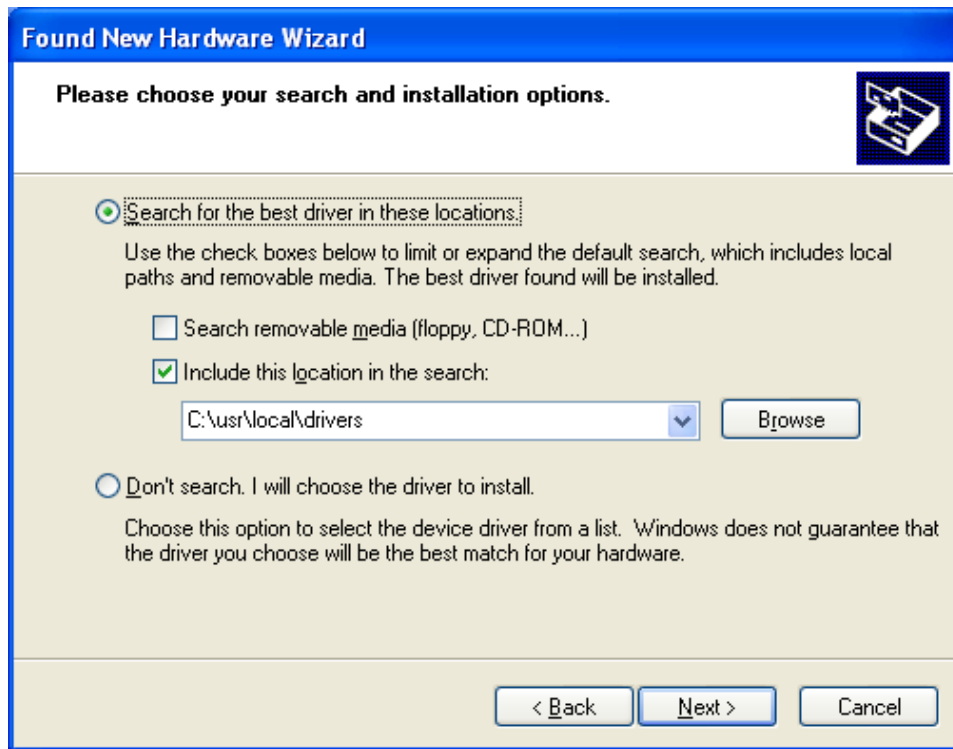
Select No, not this time; Next



Select Instal for a list or specific location; Next



Select Include this location in the search and Browse to C:\usr\local\drivers ; Next
(Or other location if you chose to a different location in STEP 2 when installing the Goebel RDC Driver files.)



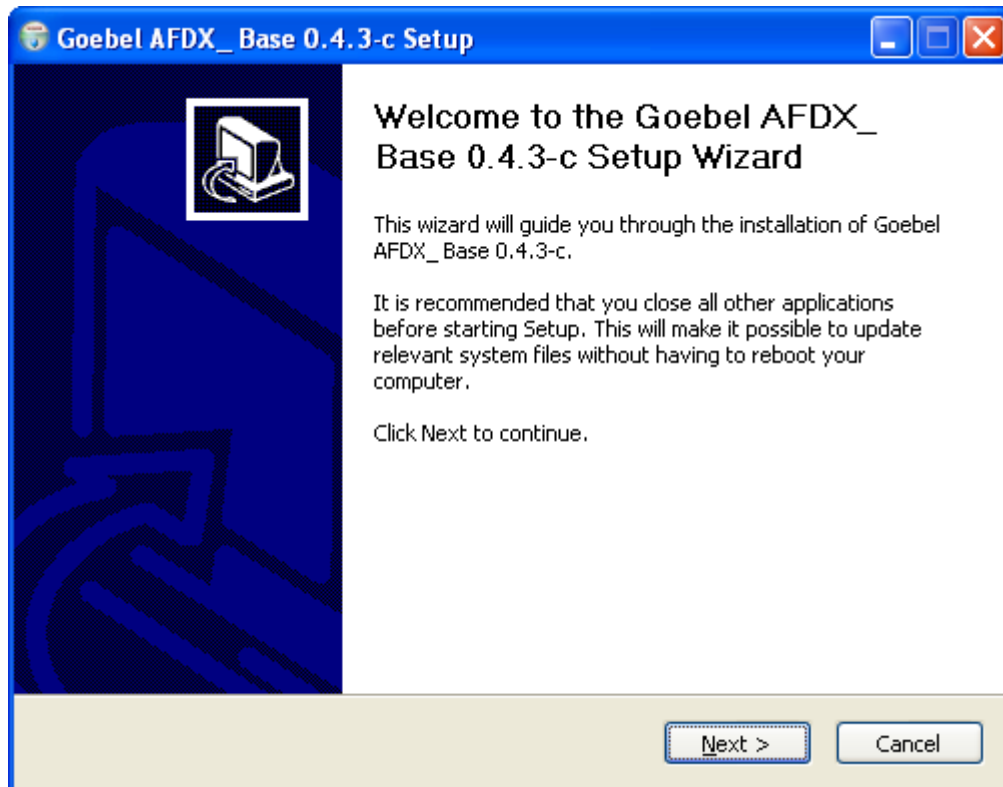
This should complete the installation of the Goebel RDC Driver:

STEP 4: Install the Goebel AFDX Utilities, Manuals, and Firmware

Run the Goebel AFDX Base included on the CD or other installation Media to install the Goebel AFDX Utilities and Manuals. This step will also install the AFDX Firmware on to the AFDX Card.

Example: Run Goebel_AFDX_Base-0.4.3-c.exe

(NOTE: Version may be a later version than shown in the Example.)



Follow the steps in the Installer to complete the Installation.

STEP 5: Install the Goebel Control Panel

Run the Goebel_Control_Panel Installer included on the CD or other installation Media to install the Goebel Control Panel.

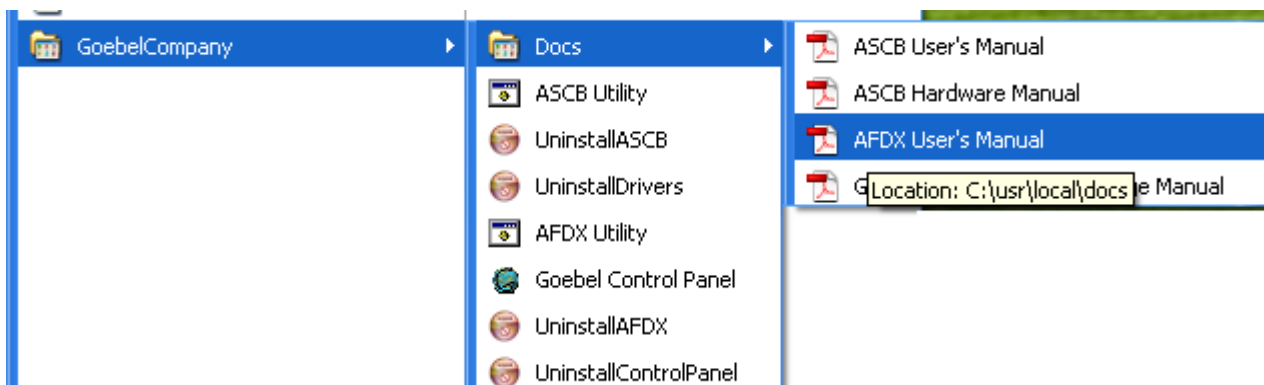
Example: Run Goebel_Control_Panel-0.1.0-a.exe

(NOTE: Version may be a later version than shown in the Example.)



Follow the steps in the Installer to complete the Installation.

Start Menu Items will be added for AFDX Utility and the AFDX Manuals and Goebel Control Panel



This completes the AFDX software installation.